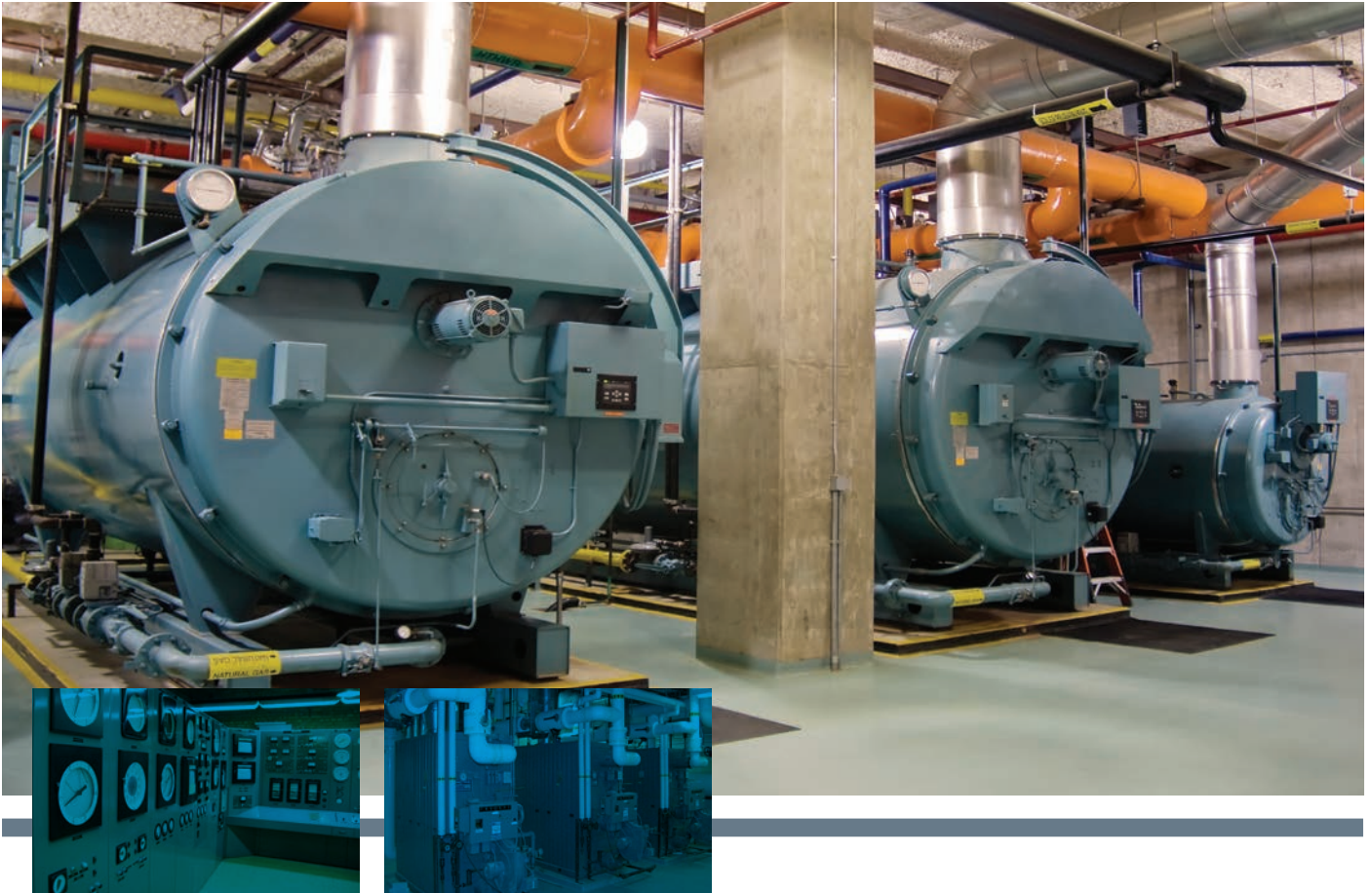




# VESDA SENSEPOINT XCL - LARGE BORE ASD SYSTEM

PROTECTS BOILER PLANT ROOMS FROM INVISIBLE DANGERS



LEARN MORE: [XTRALIS.COM](http://XTRALIS.COM)

# CONSEQUENCES OF SMOKE OR GAS IN A BOILER PLANT ROOM

The use of either liquid petroleum gas (LPG, a propane/butane mix) or natural gas (LNG, primarily methane) as fuel to power many forms of commercial, residential and manufacturing equipment is widespread.

With the advantages of these cost-effective and relatively “green” fuels come the added risk of gas leaks that might result in an explosion if ignited.

Water boilers, heating equipment, power generators and furnaces all benefit from the use of LPG/LNG but are often located in unoccupied equipment rooms or basements where potentially explosive concentrations of combustible gases can go undetected. While ventilation can help reduce the consequences of a gas leak, reliable detection of dangerous gas concentrations is recommended.

Added to this explosion risk is the ever-present danger to occupant’s health from carbon monoxide (CO) known as the “silent killer” \* since it has no taste, odour or colour to warn of its presence.

Poorly serviced or inefficient gas-fired equipment in areas with reduced airflow can lead to the build-up of this harmful gas, resulting in severe injury or in some cases death.



# INTRODUCING VESDA SENSEPOINT XCL – LARGE BORE ASD SYSTEM

Extending its world-renowned VESDA aspirating smoke detection (ASD) technology, Xtralis has introduced the VESDA Sensepoint XCL – Large Bore gas detector that connects to the Xtralis VESDA smoke detector to deliver a combined smoke detection and environmental monitoring solution.

The benefits of VESDA Sensepoint XCL – Large Bore gas detectors are:

- Seamless incorporation onto Xtralis ASD pipe networks without complex system redesign, electrical cabling or tubing
- 24/7 active sampling of gas threats through multiple sampling holes on pipe network

- Compact in size with robust housing, suitable where space is a premium
- Capable of remote sampling – no need to enter restricted / secure areas, or use special access equipment
- Can be located at a central location allowing easy and safe access for inspection, service and maintenance
- Easily configured, commissioned and maintained through embedded Bluetooth wireless connection to smart device



\* Leading cause of accidental poisoning deaths in America with 500 lives lost p.a. – US Centre for Disease Control.

# COMBINED SMOKE AND GAS DETECTION

## RELIABLE PERFORMANCE

- The flow of smoke and gas in large bore pipes is monitored by the Xtralis ASD detector
- Absolute smoke measurement is provided with the industry's only optical clean-air bleed that guarantees reliable performance throughout operational life

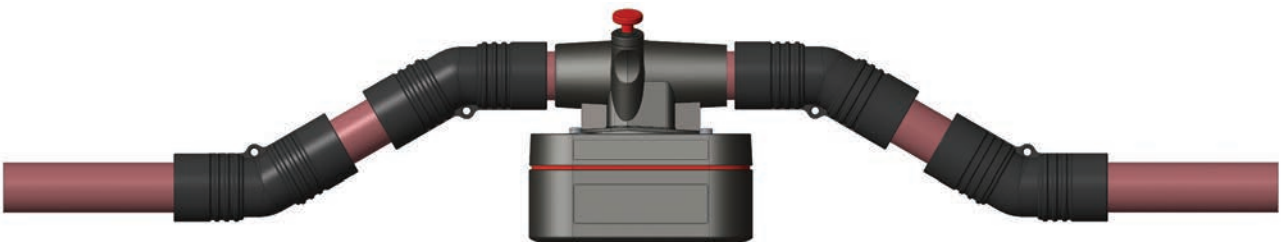
## FLEXIBLE SYSTEM INTEGRATION

- Real-time smoke and gas data can be sent to a number of control points through the use of a wide range of high- and low-level interfaces including FACP, BMS, PLCs and HVAC systems or simple audio/visual notification appliances

## BENEFITS

- 24/7 active monitoring of smoke and gas threats
- The same ASD air sampling pipe network is used for the transportation of smoke and gas
- Remote sampling allows the mounting of detectors at a central location
- Flexible deployment of sampling holes at different heights and locations appropriate to the density of the target gas (i.e. ceiling detection for H<sub>2</sub>, head height detection for CO)
- Lower total cost of ownership when compared to installing and maintaining conventional smoke and gas detectors:

- Detectors' central mounting location enables easy access for service and maintenance
- No need to access detection zone
- Modular design allows parts to be replaced in the field



VESDA Sensepoint XCL – Large Bore Connect to Xtralis ASD Pipe Network

## ABOUT XTRALIS

---



Xtralis is the leading global provider of powerful solutions for the very early and reliable detection of smoke, fire, and gas threats. Our technologies prevent disasters by giving users time to respond before life, critical infrastructure or business continuity is compromised.

We protect highly valued and irreplaceable assets and infrastructure belonging to the world's top governments and businesses.

**To learn more, please visit us at [www.xtralis.com](http://www.xtralis.com)**