



Historical Sites, Museums and Significant Religious Buildings

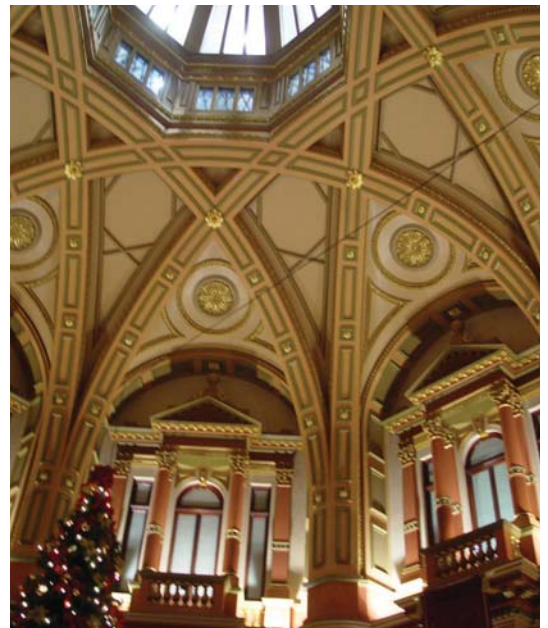
Protecting our heritage...

There are many heritage listed buildings dating back hundreds of years as well as museums and significant religious buildings sheltering tremendous valuable pieces of artwork and priceless books. With these sites, full fire protection is essential as once a building is gone, it is gone forever. There is no room for error.

ICAM aspirating smoke detection systems are the undeniable solution!

Vulnerabilities within historical buildings

- Aesthetics are prime requirements -discrete monitoring
- Monitoring irreplaceable assets
- Wiring is unacceptable
- Limited access for installation
- Rapid response
- No nuisance alarms – extinguishing means disaster
- Early warning to allow controlled evacuation
- Inaccessibility for maintenance
- Minimal servicing time window for servicing
- Limited space – compact detection is critical
- Periodic testing is difficult
- Day/night sensitivity



The gems that protect the gems



**ILS-1 and ILS-2
Laser Aspirating
Smoke Detector**

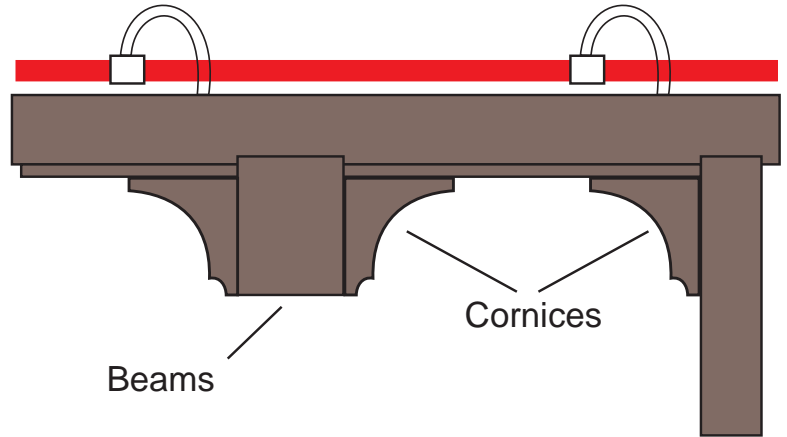


**IFT-1, IFT-4, IFT-6, IFT-15
Highly sensitive
Laser Aspirating Smoke Detector**

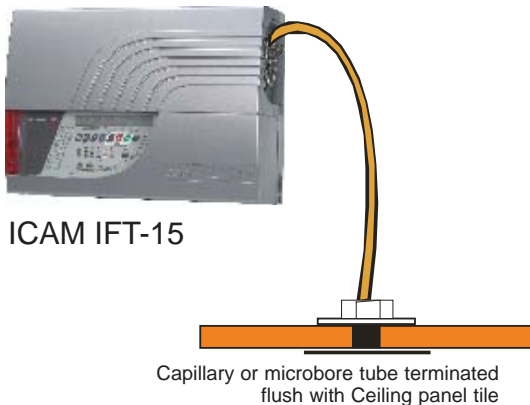


Maximum protection... Minimum intrusion

When installing smoke detection systems within heritage sites you have to consider structural aesthetics of the system and maintain the integrity of the building. 25 mm wide bore piping is standard in many sampling systems. The installation of such units involves hiding the sampling pipes above ceilings, under floor boards, in beam extensions and through walls cavities.



Capillary tubes runs above the ceiling and enter the fire zone through a small hole in the cornice



ICAM IFT-15

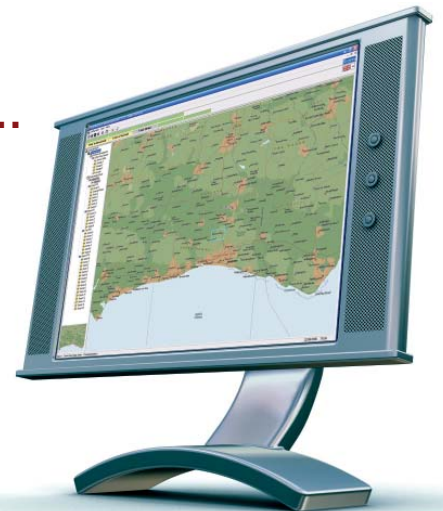
Capillary or microbore tube terminated flush with Ceiling panel tile

The ICAM IFT-15 uses flexible 6 mm microbore tubes that can be easily installed and concealed.

In properties with ornate ceilings the microbore sampling tube can be installed without either damage or deterioration to the structure. As the ICAM IFT microbore tube contains no joins, bends or T-pieces, there are no points in which the system can lose sampling pressure or pull dust and dirt into the system.

Xtralis VSM4, have the system at your fingertips...

Xtralis VSM4 management software provides full and comprehensive integration of your fire protection systems. VSM4 configures, monitors and troubleshoots your fire systems. It is easy-to-use and has been designed to provide you, the operator, with complete control. The user-friendly interface allows you to quickly assess and respond to system events—all from one convenient location. Xtralis VSM4 is a total solution for integrated control and monitoring of your very early warning smoke detection system.



Other industries

Unmanned sites

- Fully self-contained
- Additional environmental parameters monitored
- Web access

Warehouses

- Pipes can be placed within the racking
- Minimize maintenance costs
- Access difficult to reach areas which cannot be monitored by normal detection

Correctional Facilities and Detention Centers

- Tamper proof air sampling
- Central Maintenance facilities

Cold stores

- No heated detector bases
- Very Early Warning
- Unaffected by high airflows
- Simple installation

Mines

- Individual protection of high-voltage switchgear cabinets
- HV cabinets are bolted and cannot be opened easily
- PLC and control rooms
- Electrical substations

Historic buildings/ Museums

- Discrete monitoring
- Rapid response
- Monitoring valuable assets

IT rooms

- Extremely high sensitivity
- Individual cabinet identification
- Unaffected by high air speeds

Exclusive Residences, Apartments, Hotels, Shops and Offices

- Aesthetic, invisible
- Remote web monitoring

Utility providers

- Large area coverage
2,000 sqm (20,000 sq ft)

Transport

- Ideally suited to long compartments
- Concealed detection
- Automatic air pollution compensation
- Multiple sectors for carriage sets with integral cabs

Significant religious buildings

- Unobtrusive detection
- Earliest detection

Wind Turbines

- Smoke detection control during braking both Emergency and Operational
- Unaffected by arcing, lightning and static electricity
- Unaffected by air speeds within the generator
- Insensitive to environmental conditions



www.xtralis.com

The Americas +1 781 740 2223 **Asia** +852 2916 8894 **Australia and New Zealand** +61 3 9936 7000
Continental Europe +32 56 24 19 51 **UK and the Middle East** +44 1442 242 330

The contents of this document are provided on an "as is" basis. No representation or warranty (either express or implied) is made as to the completeness, accuracy or reliability of the contents of this document. The manufacturer reserves the right to change designs or specifications without obligation and without further notice. Except as otherwise provided, all warranties, express or implied, including without limitation any implied warranties of merchantability and fitness for a particular purpose are expressly excluded.

This document includes registered and unregistered trademarks. All trademarks displayed are the trademarks of their respective owners. Your use of this document does not constitute or create a licence or any other right to use the name and/or trademark and/or label.

This document is subject to copyright owned by Xtralis AG ("Xtralis"). You agree not to copy, communicate to the public, adapt, distribute, transfer, sell, modify or publish any contents of this document without the express prior written consent of Xtralis.

ICAM[™]
by **xtralis**[™]