

VESDA ACCESSORIES (POWER SUPPLY)



VPS-400US/48

The VESDA power supply, model VPS-400US/48, is configured for telecommunication applications and requires a 48 VDC uninterruptible power source that serves as both the primary and back-up power source for the VESDA Aspirated Smoke Detection system.

The VESDA power supply, model VPS-400US/48, is a multiple zone switching power supply. The VPS-400US/48 is capable of providing power to one, two, three or four VESDA detectors. Alternatively, the VLP power supply, model VPS-400US/48, is capable of providing power for one to several VESDA remote accessories - displays, relay outputs, etc.



Installation of the VESDA Power Supply, Model VPS-400US/48

The VESDA power supply, model VPS-400US/48, converts 48 VDC to 24 VDC power via a low dissipative stabilizer that uses pulse width modulation to control the output voltage.

The VPS-400US/48 should be installed in accordance with the National Electrical Code, NFPA 72, and in accordance with any local regulations.

See wiring diagrams for proper hookup.

Components

The VESDA power supply, model VPS-400US/48, consists of four major components: the mounting enclosure, the switching power supply, the 3A slow - acting type output fuse and two screw terminal barrier strips (input and output).

Features

- Input 48 VDC + or -
- 2.5 amp continuous supply current at 24 VDC
- "Power - OK" Led
- Overvoltage protection
- Rectangular current limiting
- Built-in Emi filter
- Meets conducted noise standard of Mil - Std 461B
- Input and output connections are via screw terminal barrier strip

Listings / Approvals

- UL
- FM

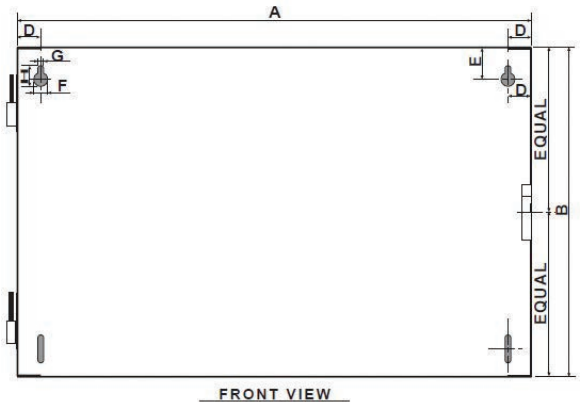
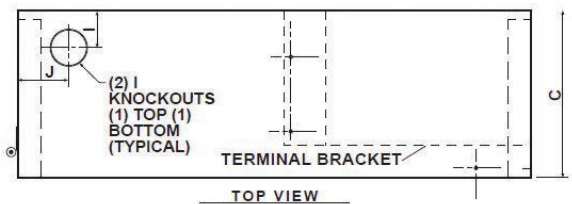
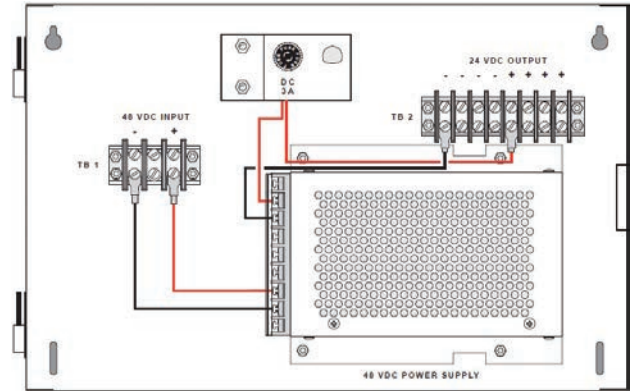
TECHNICAL SPECIFICATIONS

Specifications

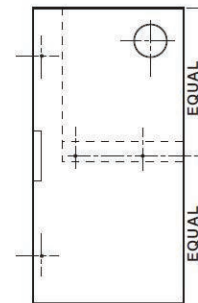
Input	Nominal Input Voltage: 48VDC
	Input Voltage Range: 40 to 56 VDC
Output	Input Fuse Rating: Internal
	Slow-acting: 4.0A - 250 volts
	Input Current: 1.6A DC typical, 1.7A DC maximum
	Nominal Output Voltage: 24VDC
Dimensions	Adjustable Output Voltage Range: 16.8 - 26.4 VDC
	Output Current: 2.5A DC @ 86°F (30°C)
	Switching component ripple, P-P: 50 mV typical, 100 mV maximum
Weight	13.8 in. x 8.9 in. x 4.9 in. (350 mm x 225 mm x 125 mm)
Operating Temperature	8 lbs. (3.6 kg.)
Humidity	Ambient: 32° to 160°F (0° to 71°C)
EMI	10 - 95%RH, non-condensing
Cable Access	Mil-Std-461, Method CEO3 Mil-Std-461, Method REO3
Cable Termination	One inch (25 millimeters) knockouts in various positions
	Screw terminal blocks, 30-12 AWG (0.2-2.5 mm)

Ordering Information

Ordering Code	Description
VPS-400US/48	VESDA power supply



(2) I KNOCKOUTS
1 ON EACH SIDE
(TYPICAL)



Dimensions	
	in
A	13.750
B	8.875
C	4.500
D	.625
E	.875
F	.375
G	.1875
H	.687
I	1.000
J	1.375